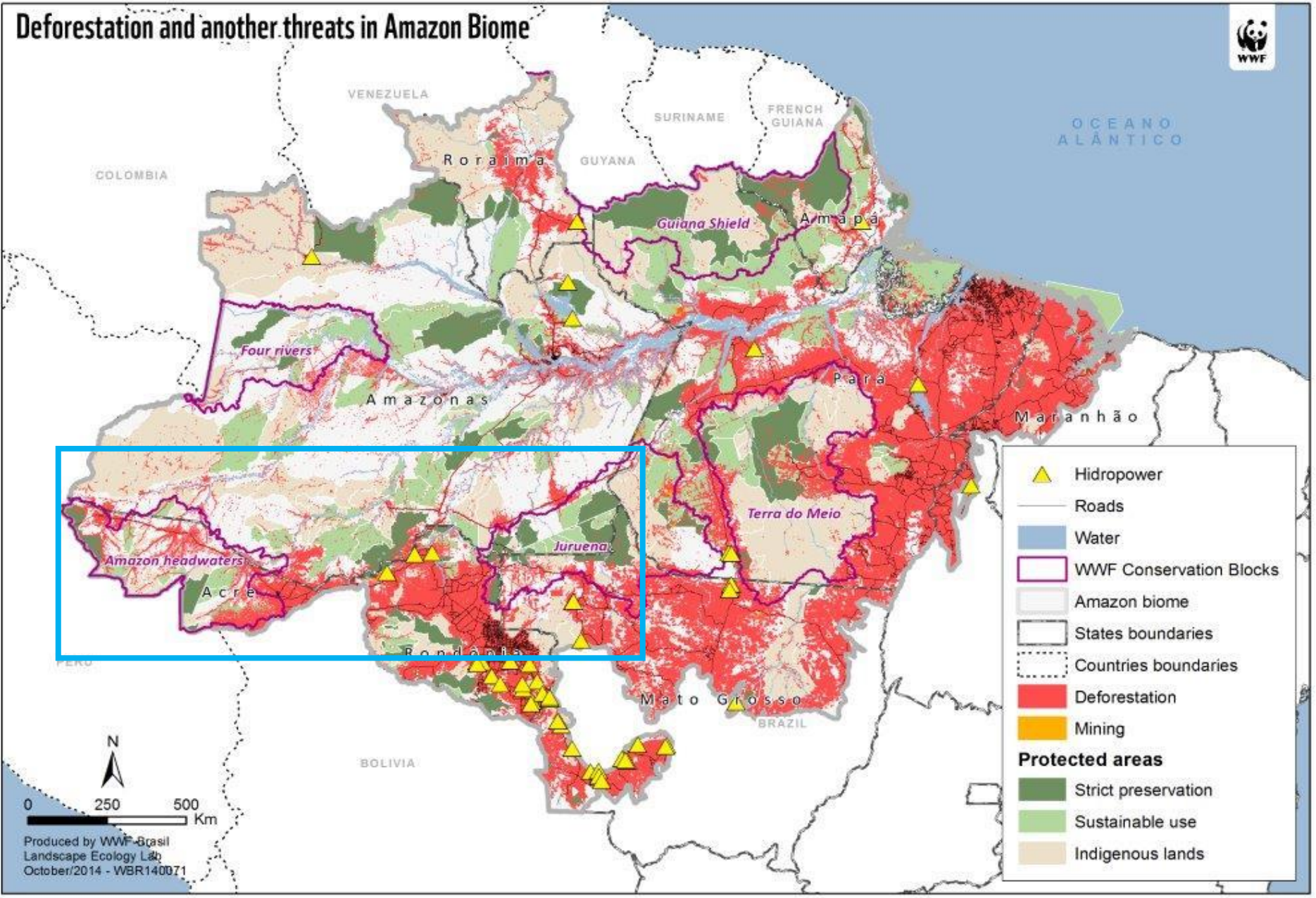


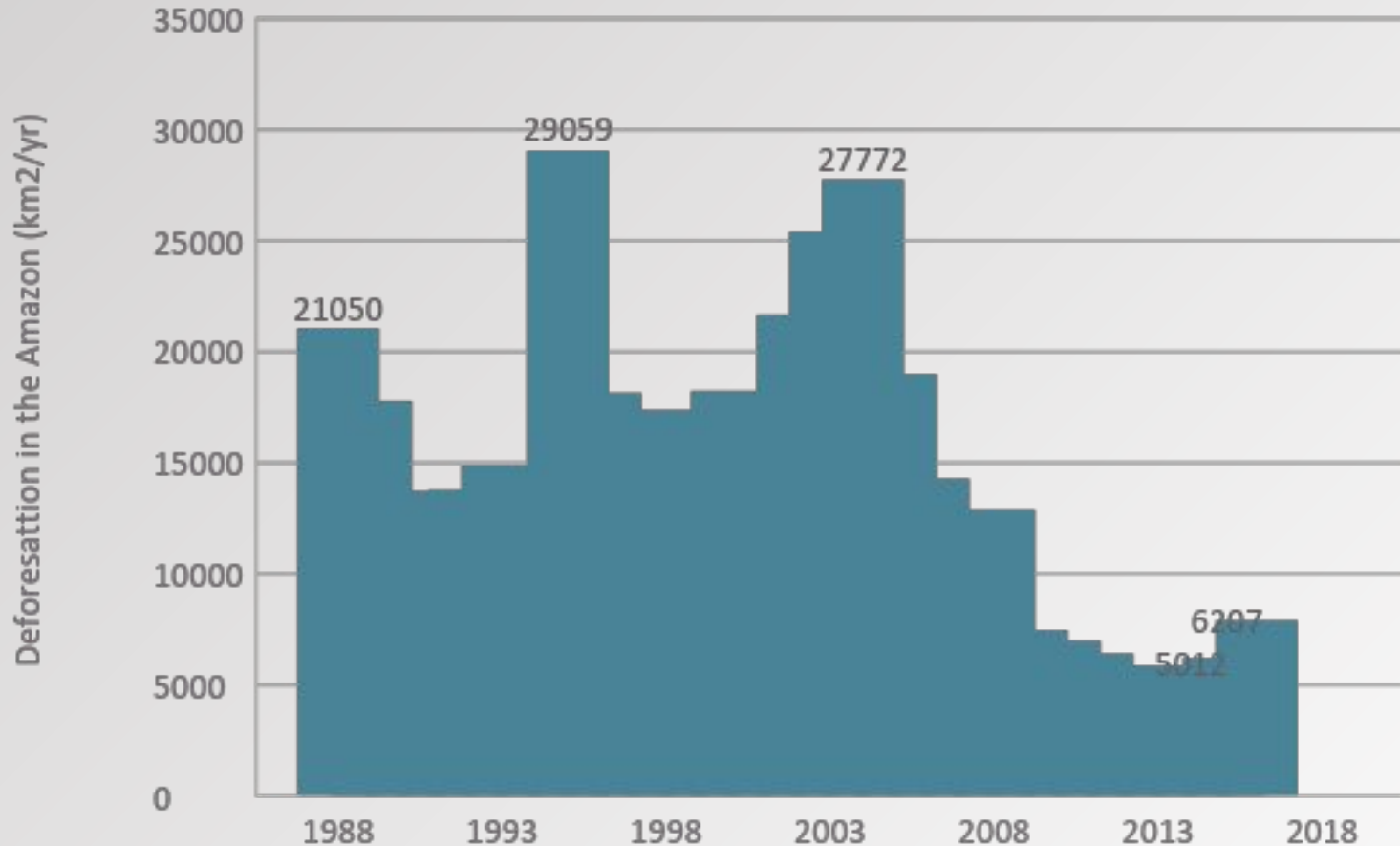
# *Sustainable development and green economy: Acre and south Amazonas*

Marco Lentini, WWF Brazil

# Deforestation and another threats in Amazon Biome



# Context



- New deforestation front of the region = 15-20% Amazon
- New opportunities for sustainable development
- > 50 MM hectares, > 50% covered by PAS
- All important drivers of forest deforestation and degradation in the Amazon present

# Partners & partnership process

- Governments (regional and municipality), social movements, coops and communities, local NGOs, productive sector, entities involved in the conservation of the local PAs
- Underlying problems: controlling deforestation, complying with Law, developing sound economic activities, repelling land grabbing and land conflicts, attracting conservation investments.
- Mapping completed and in constant update. Local platforms in a much older stage of evolution in Acre in comparison to south AM and Rondônia (CEVA, state council, PA management councils)

# Key interventions

- **Acre:** supporting the development of SISA and ISA C
- New policies and political involvement, multi-stakeholder involvement, zoning (collaborative planning)
- Change the structure of governance of the state towards PES and new environmental investments (+ monitoring, MRV)
- Attraction of investments for conservation (BNDES, kfW, BID)
- Structuring forest concessions and forest based economic activities
- Development of new markets
- **Amazonas:** support for the implementation of MAM (> 8 MM hectares of PAS) in 2006
- Support the implementation of the Mosaic
- New economic activities (CBT, NTFP management)
- Structuring the state but also municipality level deforestation curbing plans
- Development of a joint landscape approach between several internal WWF programs
- Support for specialized policies
- Influence in the state elections

# Benefits/beneficiaries

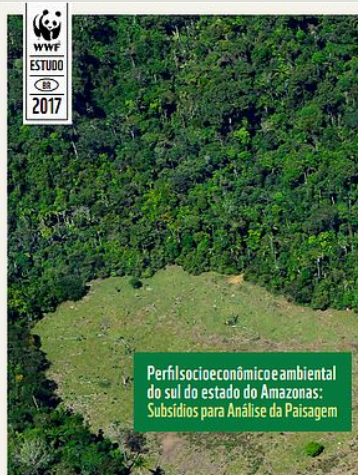
- Forest communities, smallholders, small producers
- People living in protected areas
- Acre: public health project (Aetrapp project)
- PA managers, public managers, local companies and coops, associations, NGOs, social movements.

- Notícias
- Notícias
- Opinião
- Sala de imprensa
- Publicações
  - Amazônia
  - Mata Atlântica
  - Pantanal
  - Cerrado
- Temas nacionais
- Águas
- Educação Ambiental
- Mudanças Climáticas e Energia
- Agricultura e meio ambiente
- Especiais

## Perfil socioeconômico e ambiental do sul do estado do Amazonas: subsídios para análise da paisagem

11 Julho 2017 |

Com o objetivo de reunir num único lugar informações sobre uma das regiões mais sensíveis da Amazônia, o WWF-Brasil lançou, em junho de 2017, a publicação *"Perfil socioeconômico e ambiental do sul do estado do Amazonas: subsídios para análise da paisagem"*. Esta publicação, resultado de pesquisas de campo e consultas a fontes e documentos oficiais, busca pôr, num só lugar, informações técnicas e científicas sobre a aquela região - onde estão localizados os rios Madeira e Purus e onde se situam cidades como Lábrea, Boca do Acre, Manicoré e Apuí. A publicação é voltada para cientistas, estudantes, pesquisadores e servidores públicos que desejam ter uma fonte fácil, rápida e prática de informações e dados sobre aquela área.



WWF Global

HOME EN ESPAÑOL

[Home](#)
[WWF](#)
[WHAT WE DO](#)
[OUR EARTH](#)
[YOU CAN HELP](#)
[NEWS & STORIES](#)
[IMAGES](#)
[GIFTS](#)
[DONATE](#)

[Facebook](#)
[Twitter](#)
[Instagram](#)

# Environmental service incentives in the state of Acre, Brazil: Lessons for policies, programmes and strategies for jurisdiction-wide REDD+

POSTED ON  
21 October 2013

The Brazilian state of Acre in the Amazon -- home to the Sky Rainforest Rescue project -- is considered a leader in the field of REDD+ at the state-level. Acre's law that created the Environmental Service Incentives System (SISA in Portuguese), sets out a framework for valuing a range of ecosystem services. Its REDD+ programme, ISA Carbon, is the most developed component of the SISA to date.

This WWF report analyzes the design and construction of ISA Carbon and identifies strengths and challenges. It aims to provide insights for the further development and implementation of SISA as well as identifying relevant lessons for the design of other national and subnational REDD+ mechanisms around the world.

